

# 2 Bedroom Premium

## TYPE B1a

60 sqm (646 sqft)

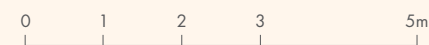
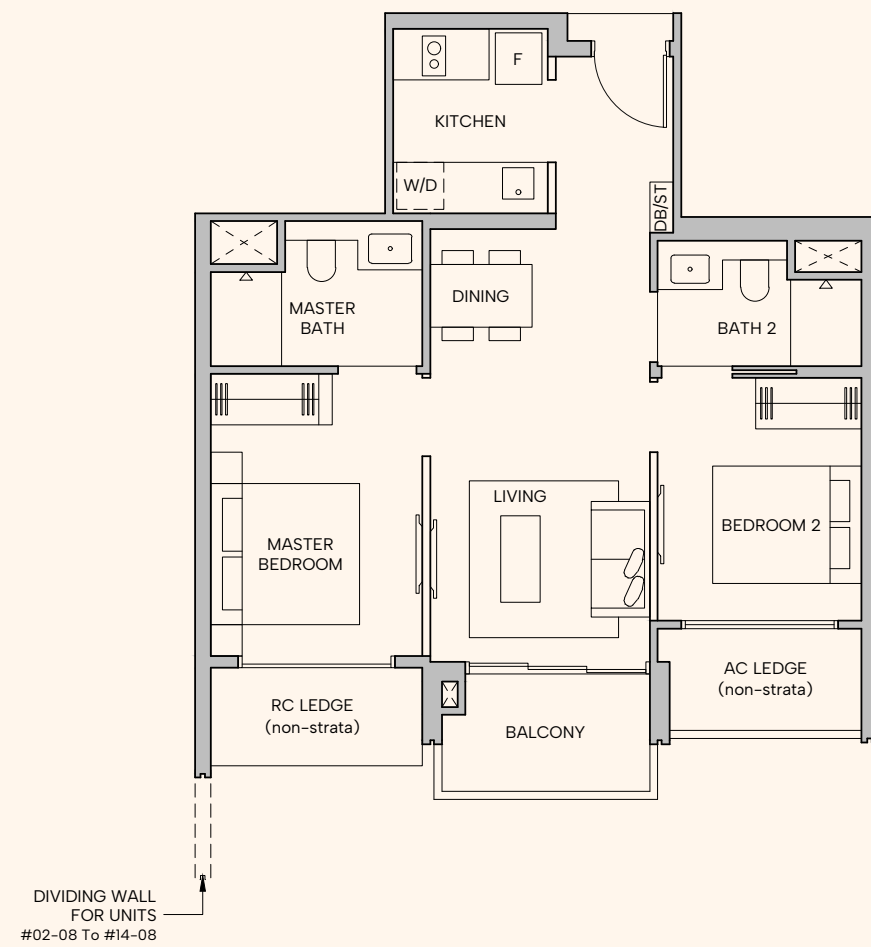
### BLOCK 20

#02-09 to #23-09

\* Mirrored Units

### Block 18

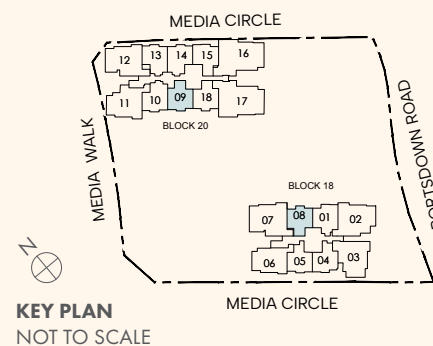
#02-08\* to #14-08\*



#### LEGEND

**F** FRIDGE **W/D** WASHER CUM DRYER **DB** DISTRIBUTION BOARD **ST** STORE  
**AC** AIR-CONDITIONER **RC** REINFORCED CONCRETE

DISCLAIMER: Area includes balcony where applicable, and excludes among others, the Air-Conditioner (AC) ledge, airwell, Reinforced Concrete (RC) Ledge and Services Voids. Please refer to the key plan for orientation. All floor plans are approximate measurements only and are subject to government re-survey. Balconies are not to be enclosed except with a balcony screen which has been approved and complies with the Competent Authority's guidelines. The cost of screen and installation shall be borne by the purchaser. For an illustration of the approved balcony screen, please refer to Annex A of this brochure.



# 2 Bedroom Premium

## TYPE B1b

60 sqm (646 sqft)

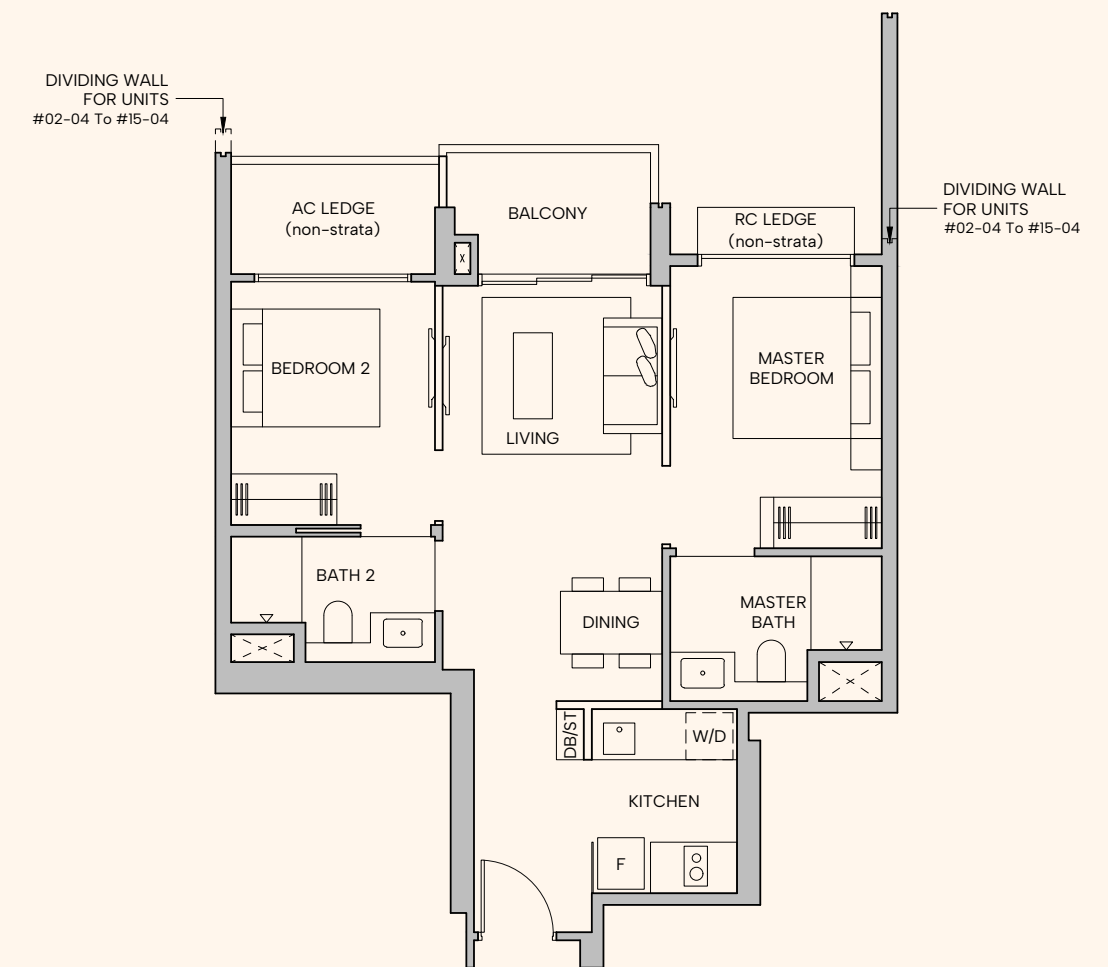
### BLOCK 20

#02-15 to #22-15

\* Mirrored Units

### Block 18

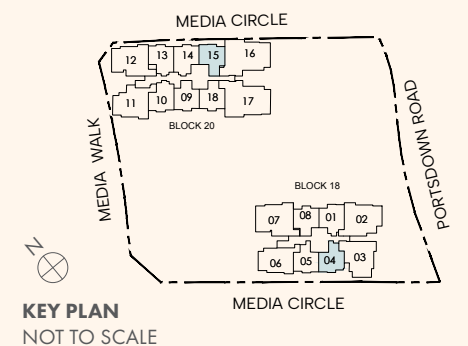
#02-04\* to #15-04\*



#### LEGEND

**F** FRIDGE **W/D** WASHER CUM DRYER **DB** DISTRIBUTION BOARD **ST** STORE  
**AC** AIR-CONDITIONER **RC** REINFORCED CONCRETE

DISCLAIMER: Area includes balcony where applicable, and excludes among others, the Air-Conditioner (AC) ledge, airwell, Reinforced Concrete (RC) Ledge and Services Voids. Please refer to the key plan for orientation. All floor plans are approximate measurements only and are subject to government re-survey. Balconies are not to be enclosed except with a balcony screen which has been approved and complies with the Competent Authority's guidelines. The cost of screen and installation shall be borne by the purchaser. For an illustration of the approved balcony screen, please refer to Annex A of this brochure.



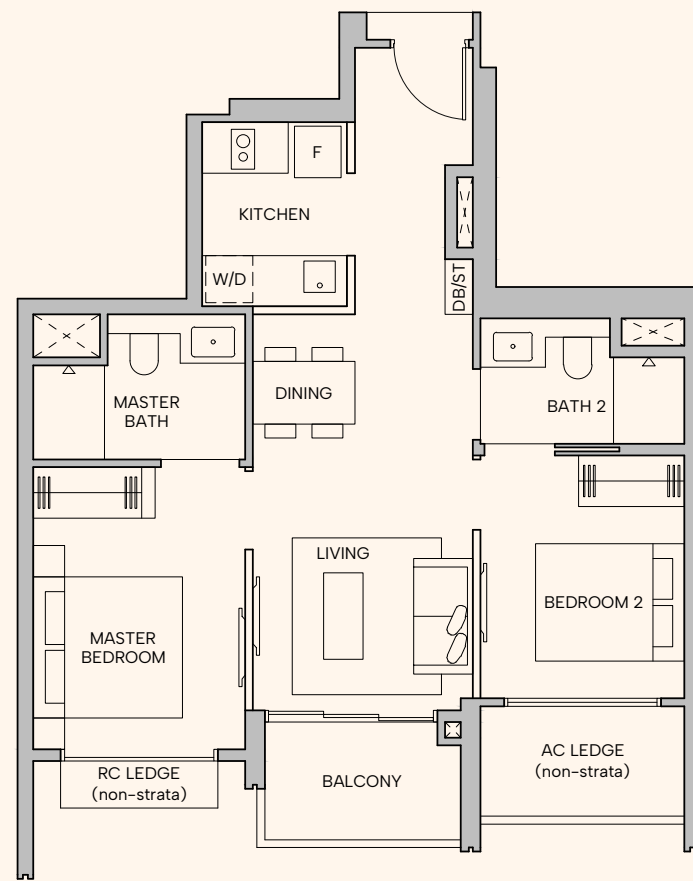
# 2 Bedroom Premium

## TYPE B1c

60 sqm (646 sqft)

### BLOCK 18

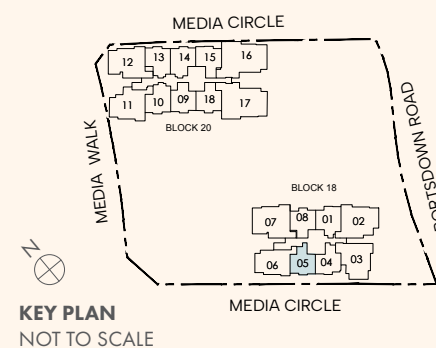
#02-05 to #15-05



### LEGEND

**F** FRIDGE **W/D** WASHER CUM DRYER **DB** DISTRIBUTION BOARD **ST** STORE  
**AC** AIR-CONDITIONER **RC** REINFORCED CONCRETE

DISCLAIMER: Area includes balcony where applicable, and excludes among others, the Air-Conditioner (AC) ledge, airwell, Reinforced Concrete (RC) Ledge and Services Voids. Please refer to the key plan for orientation. All floor plans are approximate measurements only and are subject to government re-survey. Balconies are not to be enclosed except with a balcony screen which has been approved and complies with the Competent Authority's guidelines. The cost of screen and installation shall be borne by the purchaser. For an illustration of the approved balcony screen, please refer to Annex A of this brochure.



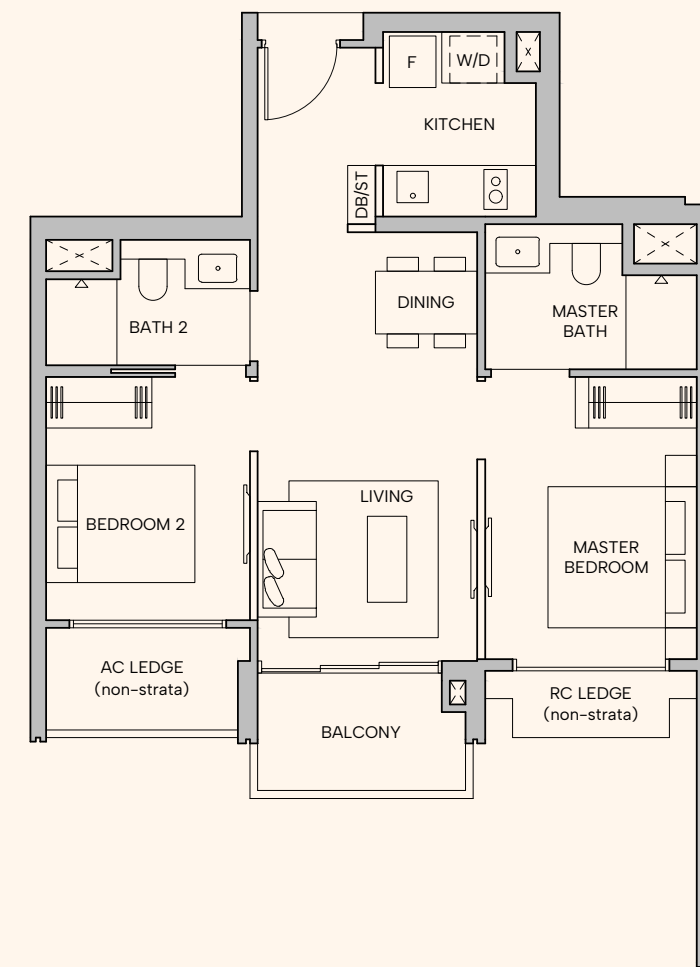
# 2 Bedroom Premium

## TYPE B1d

60 sqm (646 sqft)

### BLOCK 20

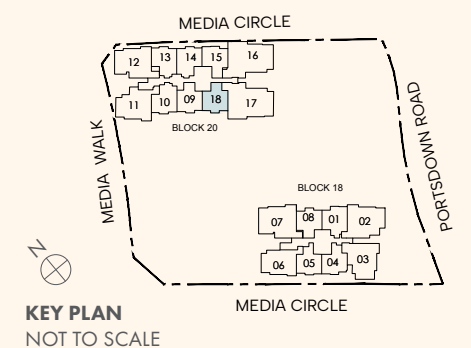
#02-18 to #22-18



### LEGEND

**F** FRIDGE **W/D** WASHER CUM DRYER **DB** DISTRIBUTION BOARD **ST** STORE  
**AC** AIR-CONDITIONER **RC** REINFORCED CONCRETE

DISCLAIMER: Area includes balcony where applicable, and excludes among others, the Air-Conditioner (AC) ledge, airwell, Reinforced Concrete (RC) Ledge and Services Voids. Please refer to the key plan for orientation. All floor plans are approximate measurements only and are subject to government re-survey. Balconies are not to be enclosed except with a balcony screen which has been approved and complies with the Competent Authority's guidelines. The cost of screen and installation shall be borne by the purchaser. For an illustration of the approved balcony screen, please refer to Annex A of this brochure.



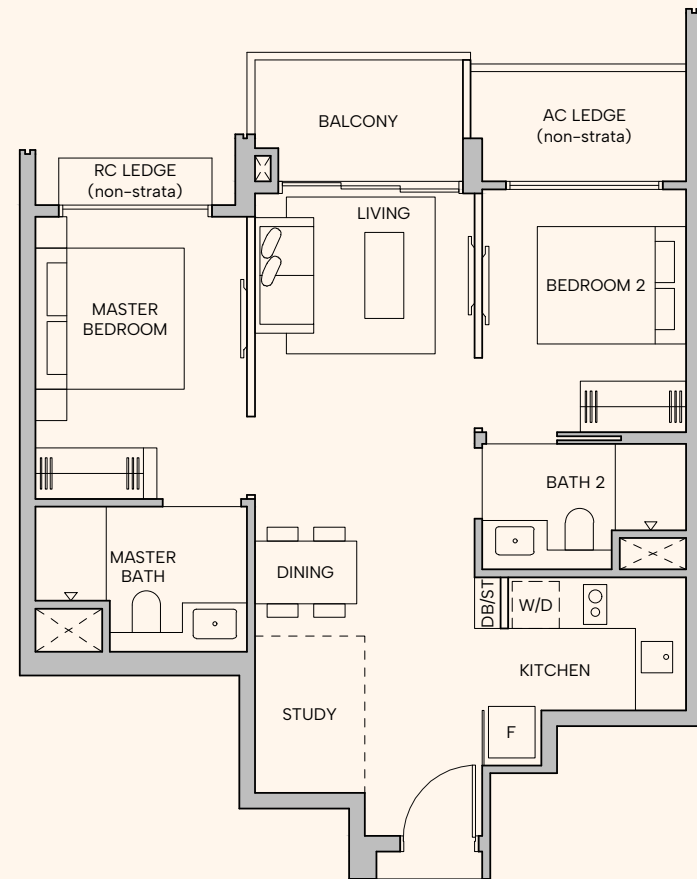
# 2 Bedroom Premium + Study

## TYPE B2

64 sqm (689 sqft)

## BLOCK 18

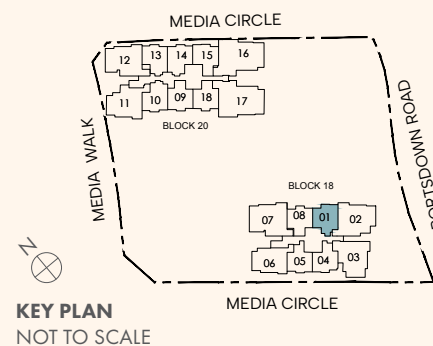
#02-01 to #14-01



### LEGEND

**F** FRIDGE **W/D** WASHER CUM DRYER **DB** DISTRIBUTION BOARD **ST** STORE  
**AC** AIR-CONDITIONER **RC** REINFORCED CONCRETE

DISCLAIMER: Area includes balcony where applicable, and excludes among others, the Air-Conditioner (AC) ledge, airwell, Reinforced Concrete (RC) Ledge and Services Voids. Please refer to the key plan for orientation. All floor plans are approximate measurements only and are subject to government re-survey. Balconies are not to be enclosed except with a balcony screen which has been approved and complies with the Competent Authority's guidelines. The cost of screen and installation shall be borne by the purchaser. For an illustration of the approved balcony screen, please refer to Annex A of this brochure.



# 2 Bedroom Premium + Study

## TYPE B3

64 sqm (689 sqft)

## BLOCK 20

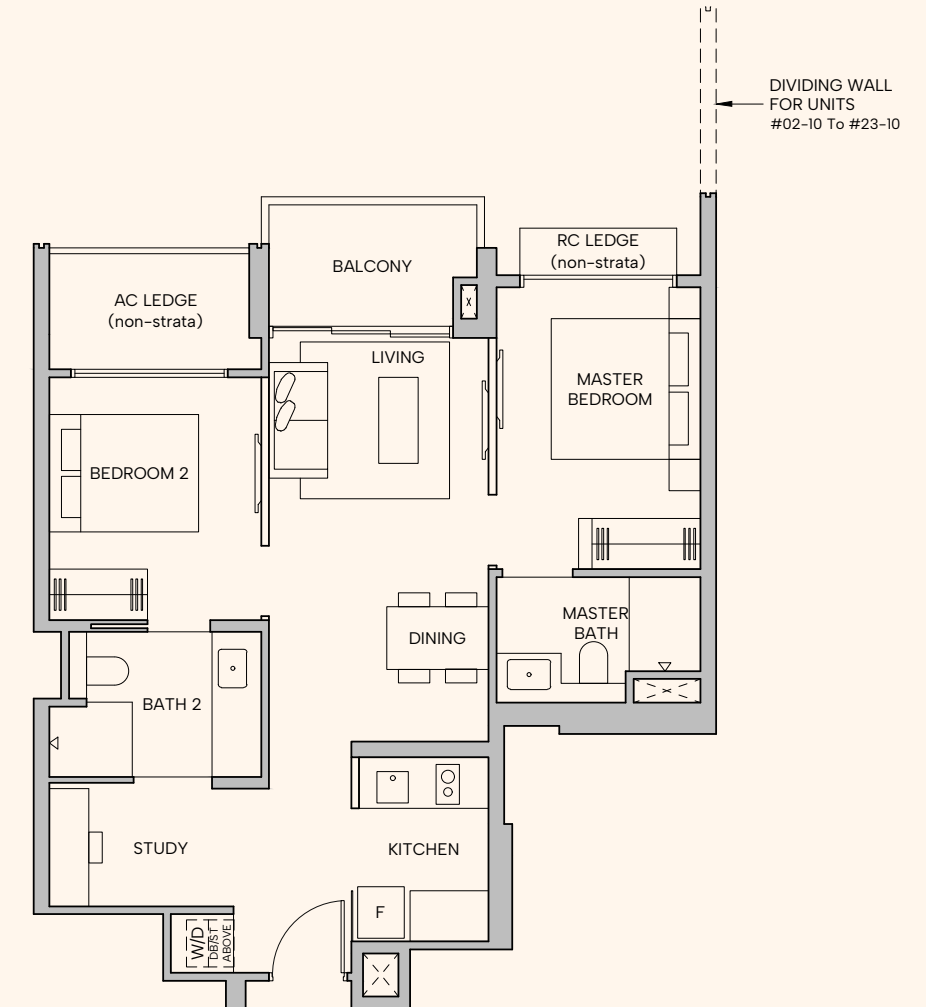
#02-10 to #23-10

#02-14 to #23-14

\* Mirrored Units

## BLOCK 20

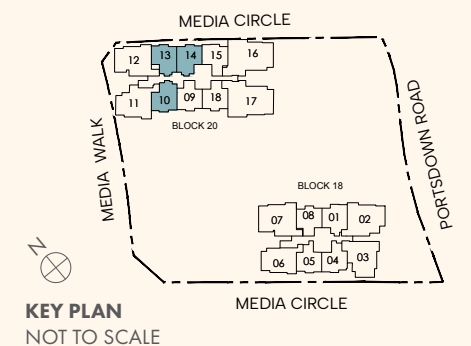
#02-13\* to #22-13\*



### LEGEND

**F** FRIDGE **W/D** WASHER CUM DRYER **DB** DISTRIBUTION BOARD **ST** STORE  
**AC** AIR-CONDITIONER **RC** REINFORCED CONCRETE

DISCLAIMER: Area includes balcony where applicable, and excludes among others, the Air-Conditioner (AC) ledge, airwell, Reinforced Concrete (RC) Ledge and Services Voids. Please refer to the key plan for orientation. All floor plans are approximate measurements only and are subject to government re-survey. Balconies are not to be enclosed except with a balcony screen which has been approved and complies with the Competent Authority's guidelines. The cost of screen and installation shall be borne by the purchaser. For an illustration of the approved balcony screen, please refer to Annex A of this brochure.



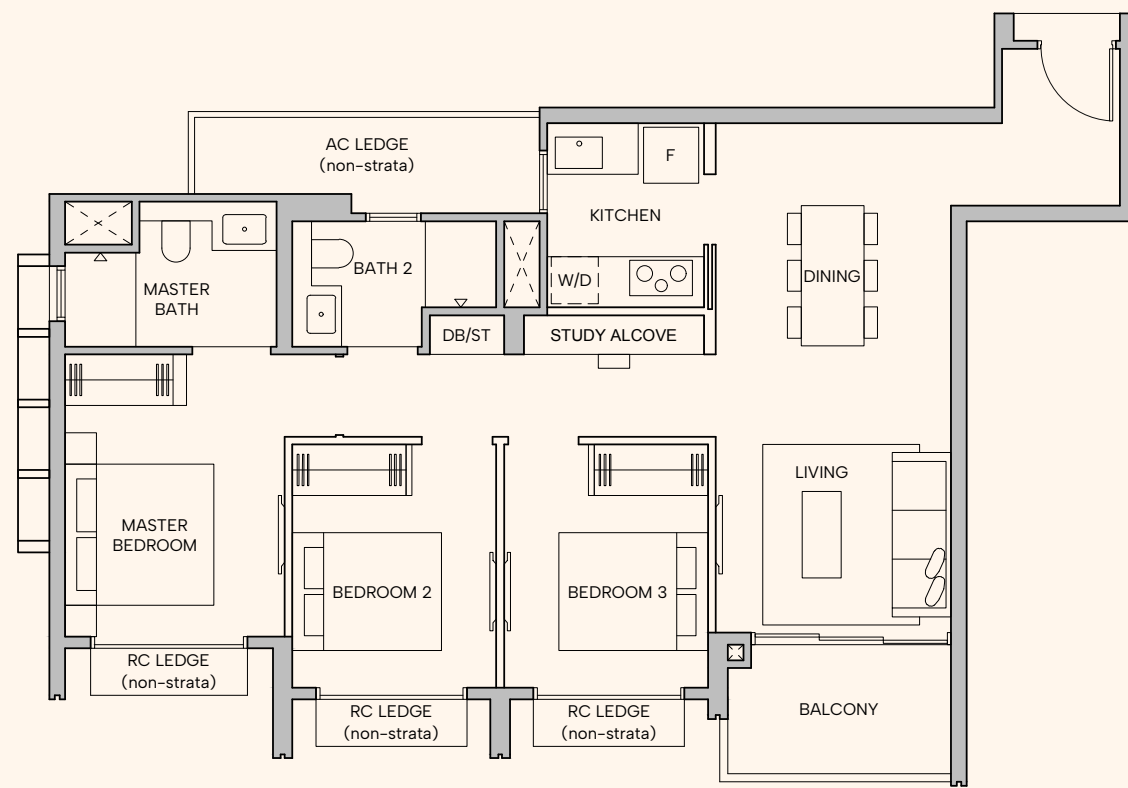
# 3 Bedroom Deluxe

## TYPE C1

83 sqm (893 sqft)

## BLOCK 18

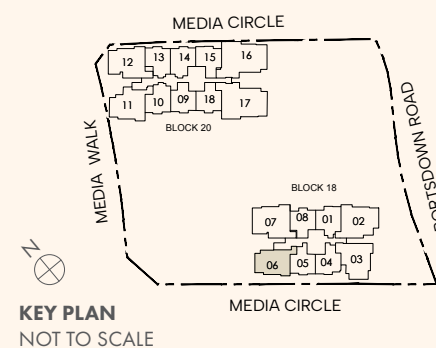
#02-06 to #15-06



### LEGEND

**F** FRIDGE **W/D** WASHER CUM DRYER **DB** DISTRIBUTION BOARD **ST** STORE  
**AC** AIR-CONDITIONER **RC** REINFORCED CONCRETE

DISCLAIMER: Area includes balcony where applicable, and excludes among others, the Air-Conditioner (AC) ledge, airwell, Reinforced Concrete (RC) Ledge and Services Voids. Please refer to the key plan for orientation. All floor plans are approximate measurements only and are subject to government re-survey. Balconies are not to be enclosed except with a balcony screen which has been approved and complies with the Competent Authority's guidelines. The cost of screen and installation shall be borne by the purchaser. For an illustration of the approved balcony screen, please refer to Annex A of this brochure.



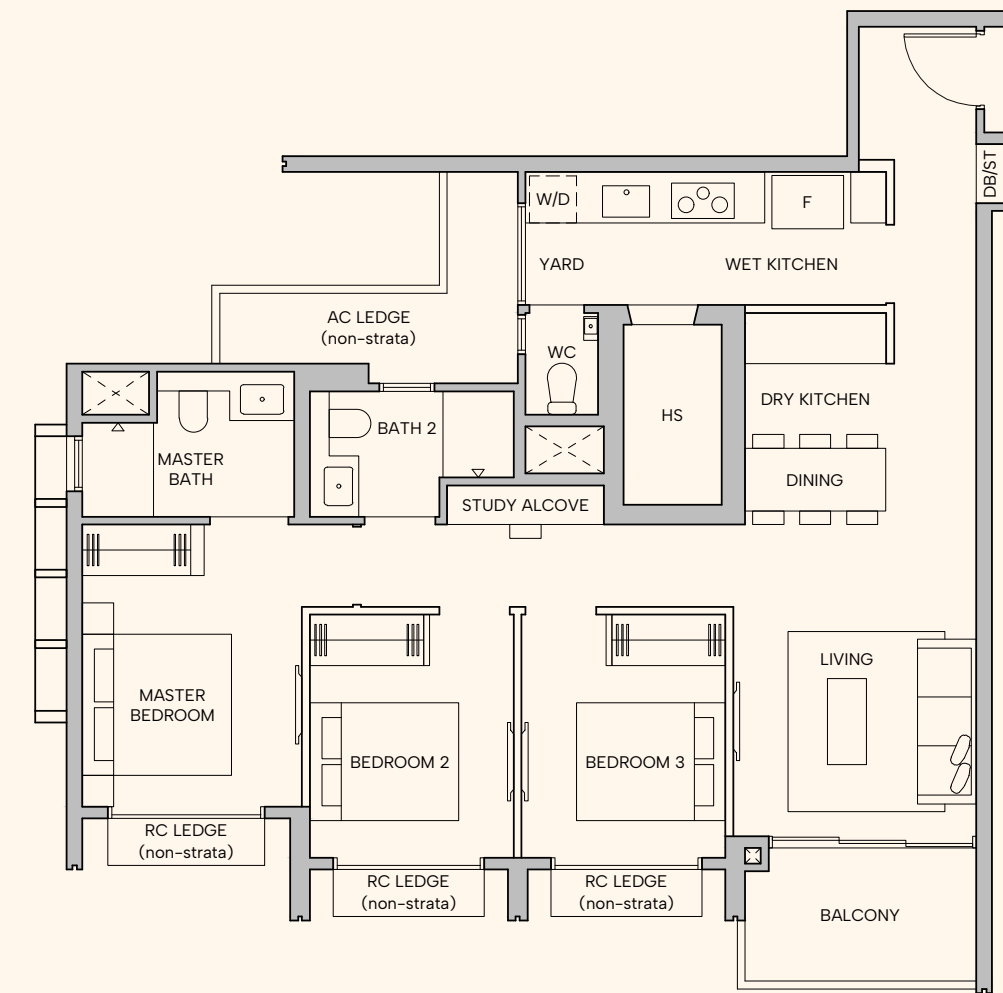
# 3 Bedroom Premium

## TYPE C2

94 sqm (1012 sqft)

## BLOCK 18

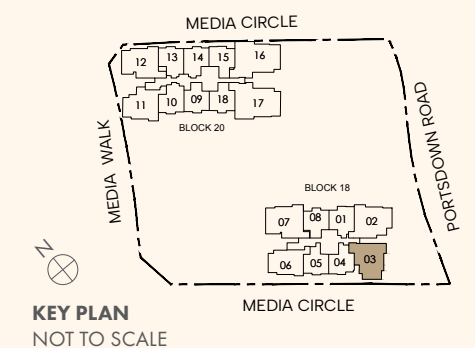
#02-03 to #15-03



### LEGEND

**F** FRIDGE **W/D** WASHER CUM DRYER **DB** DISTRIBUTION BOARD **ST** STORE **AC** AIR-CONDITIONER  
**RC** REINFORCED CONCRETE **HS** HOUSEHOLD SHELTER **WC** WATER CLOSET

DISCLAIMER: Area includes balcony where applicable, and excludes among others, the Air-Conditioner (AC) ledge, airwell, Reinforced Concrete (RC) Ledge and Services Voids. Please refer to the key plan for orientation. All floor plans are approximate measurements only and are subject to government re-survey. Balconies are not to be enclosed except with a balcony screen which has been approved and complies with the Competent Authority's guidelines. The cost of screen and installation shall be borne by the purchaser. For an illustration of the approved balcony screen, please refer to Annex A of this brochure.



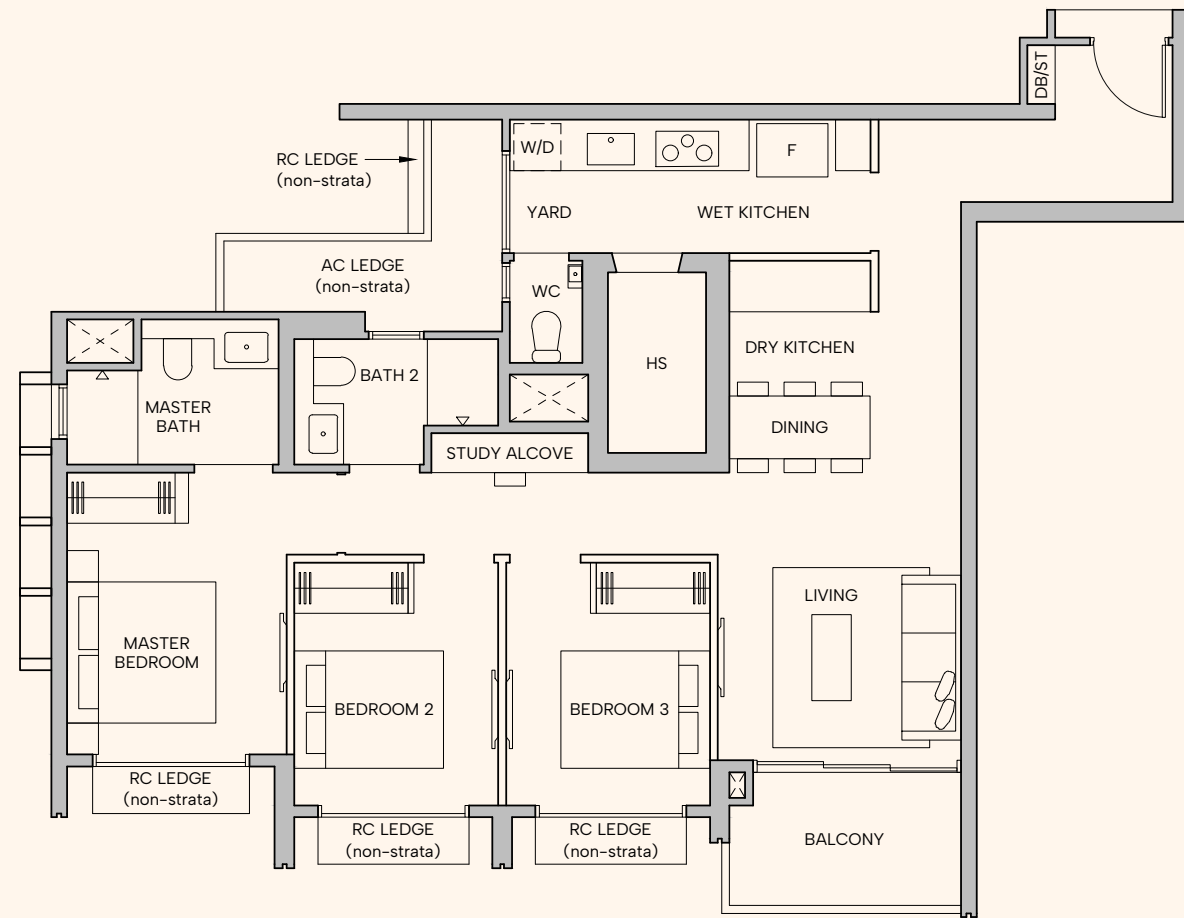
# 3 Bedroom Premium

## TYPE C3

95 sqm (1023 sqft)

### BLOCK 20

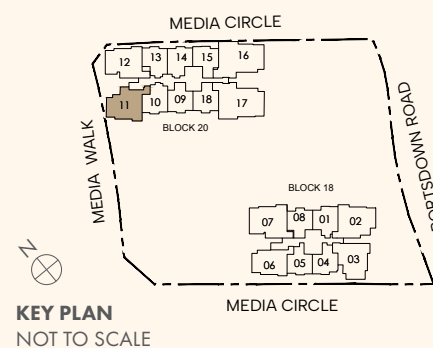
#02-11 to #23-11



### LEGEND

**F** FRIDGE **W/D** WASHER CUM DRYER **DB** DISTRIBUTION BOARD **ST** STORE **AC** AIR-CONDITIONER  
**RC** REINFORCED CONCRETE **HS** HOUSEHOLD SHELTER **WC** WATER CLOSET

DISCLAIMER: Area includes balcony where applicable, and excludes among others, the Air-Conditioner (AC) ledge, airwell, Reinforced Concrete (RC) Ledge and Services Voids. Please refer to the key plan for orientation. All floor plans are approximate measurements only and are subject to government re-survey. Balconies are not to be enclosed except with a balcony screen which has been approved and complies with the Competent Authority's guidelines. The cost of screen and installation shall be borne by the purchaser. For an illustration of the approved balcony screen, please refer to Annex A of this brochure.



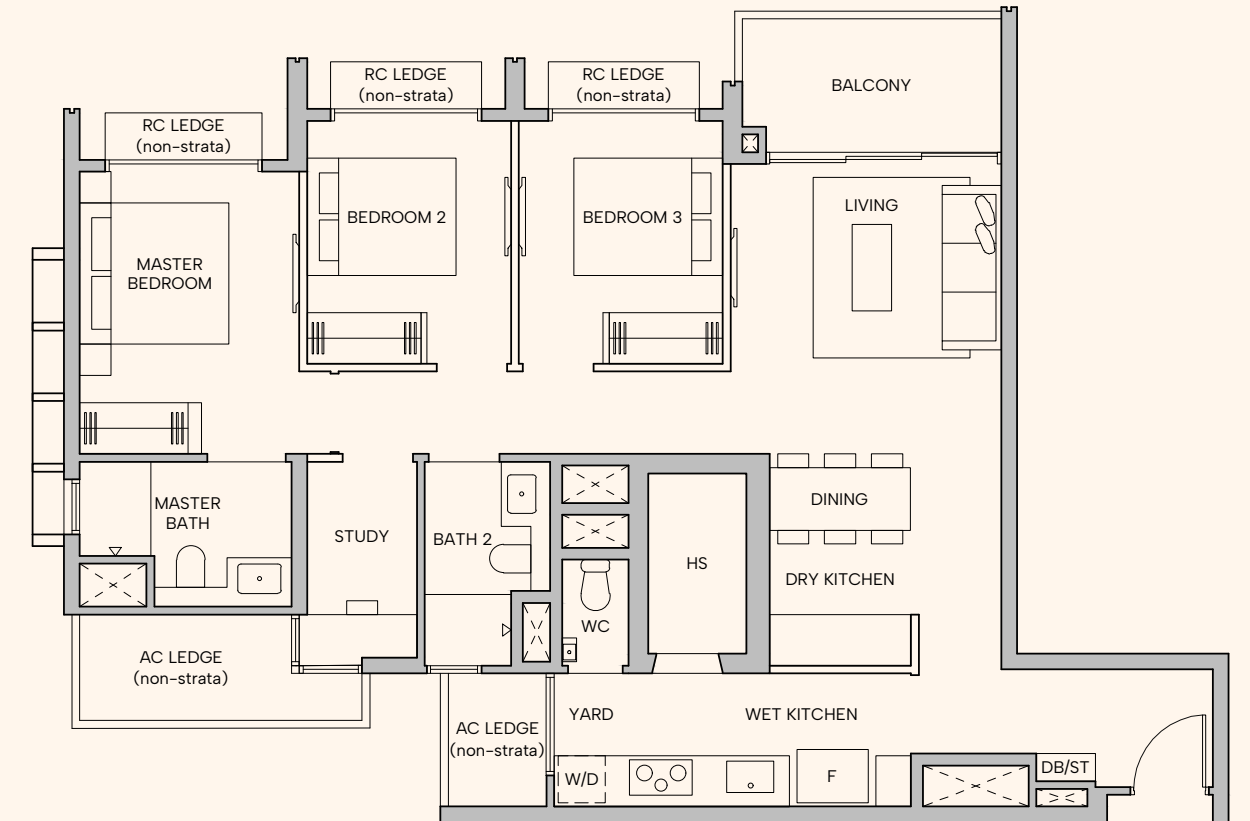
# 3 Bedroom Premium + Study

## TYPE C4

98 sqm (1055 sqft)

### BLOCK 20

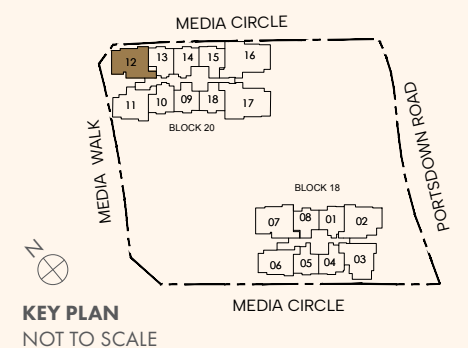
#02-12 to #22-12



### LEGEND

**F** FRIDGE **W/D** WASHER CUM DRYER **DB** DISTRIBUTION BOARD **ST** STORE **AC** AIR-CONDITIONER  
**RC** REINFORCED CONCRETE **HS** HOUSEHOLD SHELTER **WC** WATER CLOSET

DISCLAIMER: Area includes balcony where applicable, and excludes among others, the Air-Conditioner (AC) ledge, airwell, Reinforced Concrete (RC) Ledge and Services Voids. Please refer to the key plan for orientation. All floor plans are approximate measurements only and are subject to government re-survey. Balconies are not to be enclosed except with a balcony screen which has been approved and complies with the Competent Authority's guidelines. The cost of screen and installation shall be borne by the purchaser. For an illustration of the approved balcony screen, please refer to Annex A of this brochure.



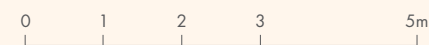
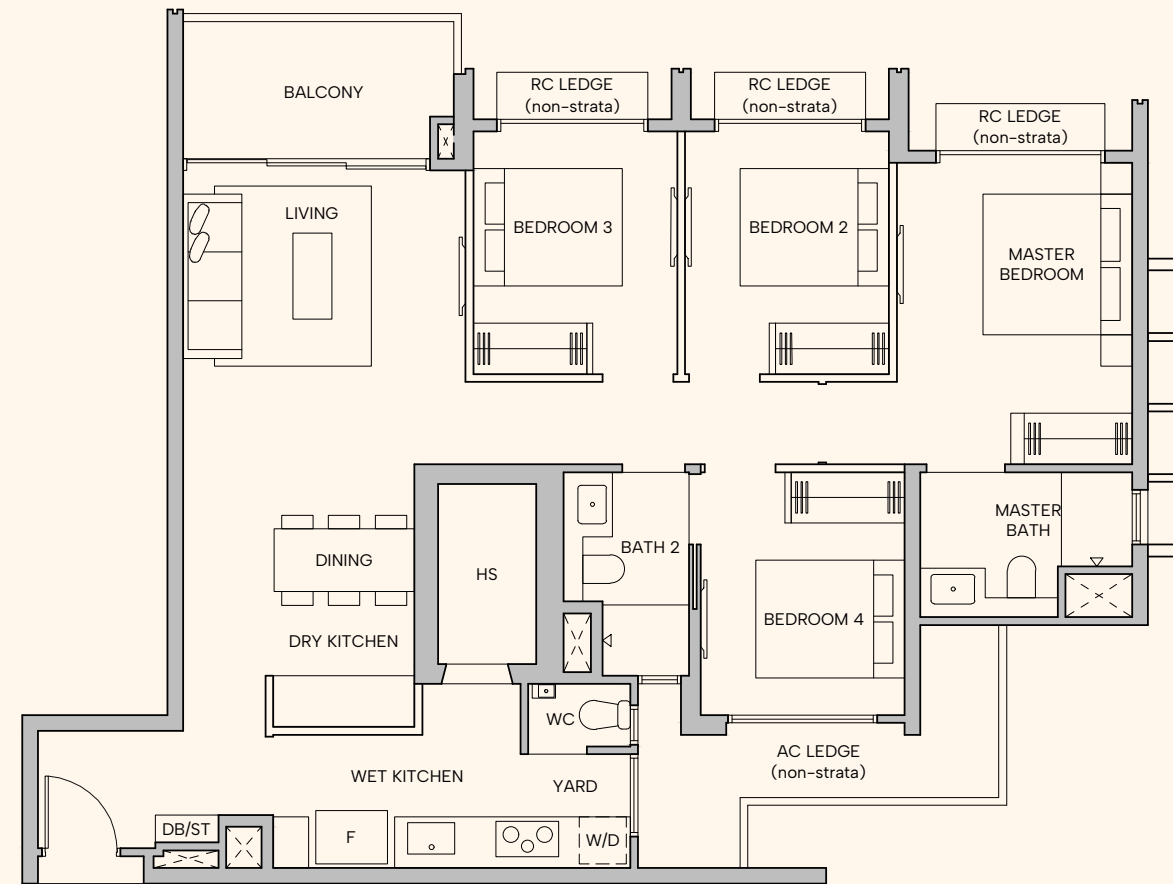
# 4 Bedroom Premium

## TYPE D1a

107 sqm (1152 sqft)

### BLOCK 18

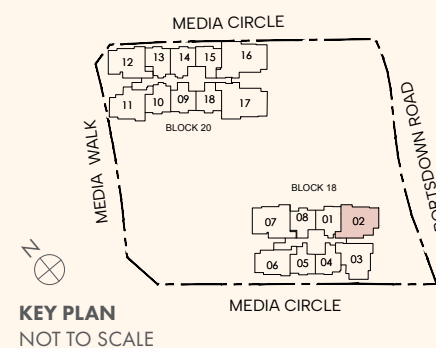
#02-02 to #14-02



#### LEGEND

F FRIDGE W/D WASHER CUM DRYER DB DISTRIBUTION BOARD ST STORE AC AIR-CONDITIONER  
RC REINFORCED CONCRETE HS HOUSEHOLD SHELTER WC WATER CLOSET

DISCLAIMER: Area includes balcony where applicable, and excludes among others, the Air-Conditioner (AC) ledge, airwell, Reinforced Concrete (RC) Ledge and Services Voids. Please refer to the key plan for orientation. All floor plans are approximate measurements only and are subject to government re-survey. Balconies are not to be enclosed except with a balcony screen which has been approved and complies with the Competent Authority's guidelines. The cost of screen and installation shall be borne by the purchaser. For an illustration of the approved balcony screen, please refer to Annex A of this brochure.



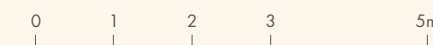
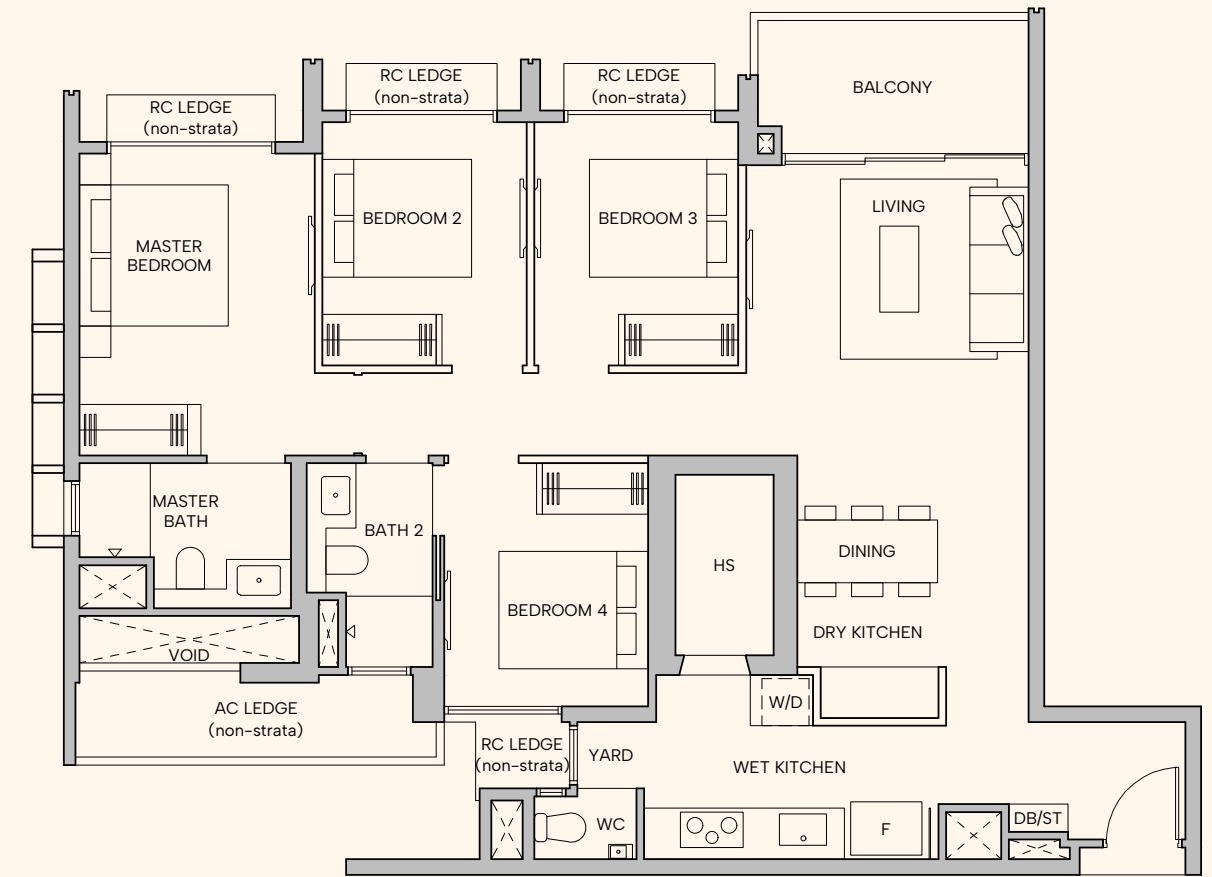
# 4 Bedroom Premium

## TYPE D1b

107 sqm (1152 sqft)

### BLOCK 18

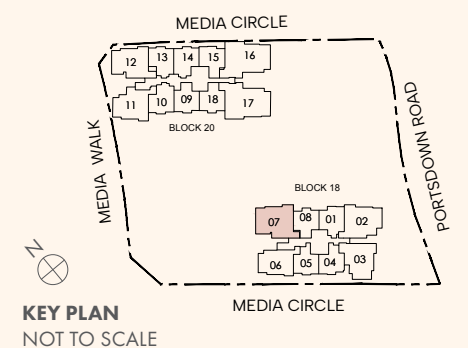
#02-07 to #14-07



#### LEGEND

F FRIDGE W/D WASHER CUM DRYER DB DISTRIBUTION BOARD ST STORE AC AIR-CONDITIONER  
RC REINFORCED CONCRETE HS HOUSEHOLD SHELTER WC WATER CLOSET

DISCLAIMER: Area includes balcony where applicable, and excludes among others, the Air-Conditioner (AC) ledge, airwell, Reinforced Concrete (RC) Ledge and Services Voids. Please refer to the key plan for orientation. All floor plans are approximate measurements only and are subject to government re-survey. Balconies are not to be enclosed except with a balcony screen which has been approved and complies with the Competent Authority's guidelines. The cost of screen and installation shall be borne by the purchaser. For an illustration of the approved balcony screen, please refer to Annex A of this brochure.



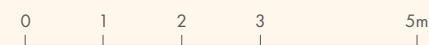
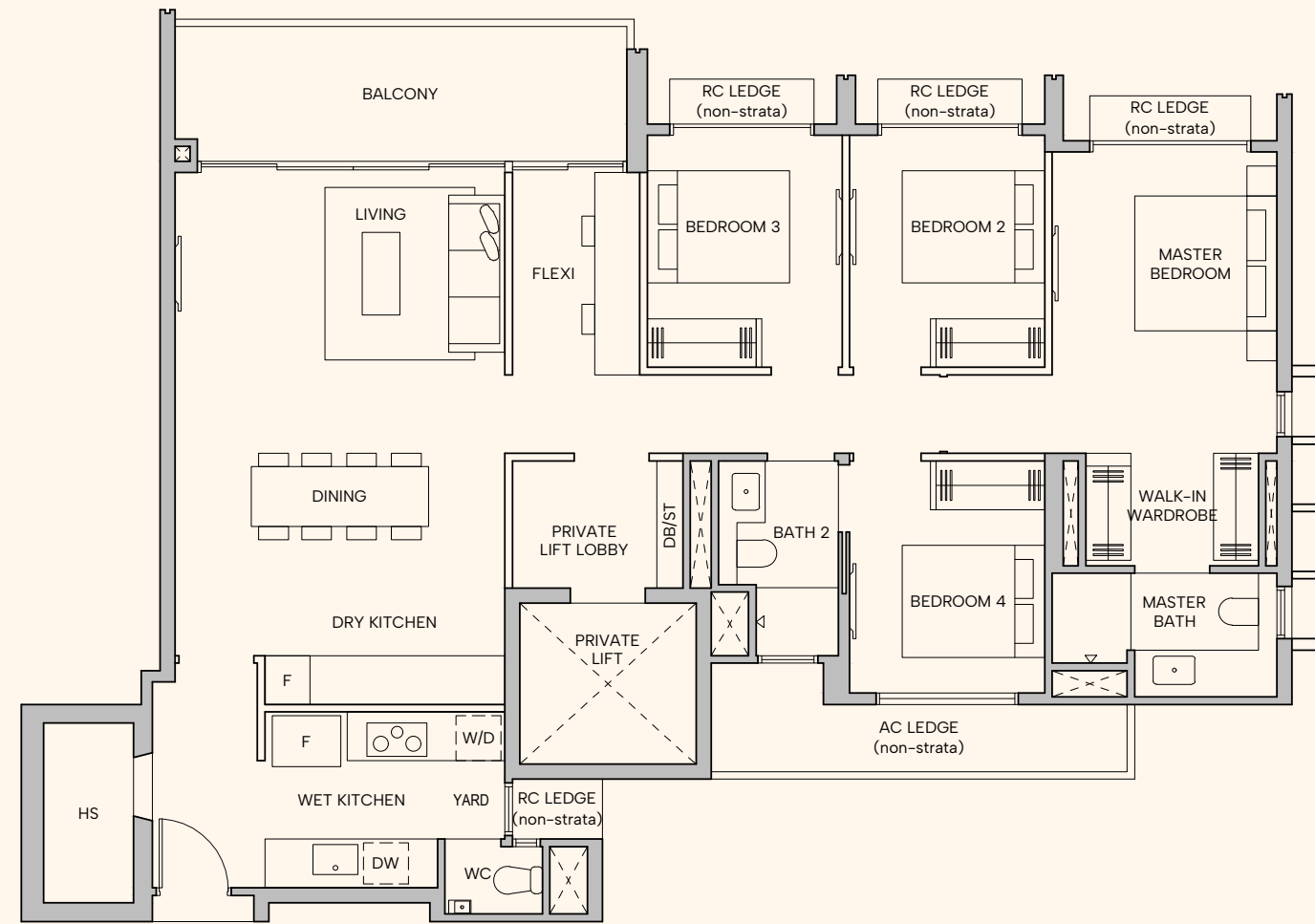
# 4 Bedroom Suite + Flexi

## TYPE D2a

133 sqm (1432 sqft)

### BLOCK 20

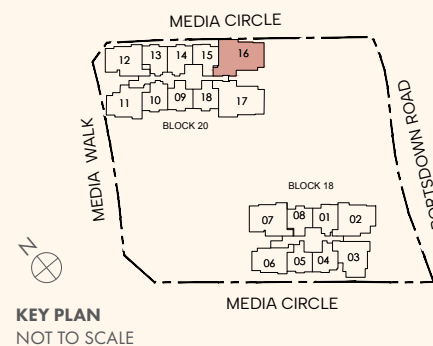
#02-16 to #22-16



#### LEGEND

F FRIDGE W/D WASHER CUM DRYER DB DISTRIBUTION BOARD ST STORE AC AIR-CONDITIONER  
 RC REINFORCED CONCRETE HS HOUSEHOLD SHELTER WC WATER CLOSET DW DISHWASHER

DISCLAIMER: Area includes balcony where applicable, and excludes among others, the Air-Conditioner (AC) ledge, airwell, Reinforced Concrete (RC) Ledge and Services Voids. Please refer to the key plan for orientation. All floor plans are approximate measurements only and are subject to government re-survey. Balconies are not to be enclosed except with a balcony screen which has been approved and complies with the Competent Authority's guidelines. The cost of screen and installation shall be borne by the purchaser. For an illustration of the approved balcony screen, please refer to Annex A of this brochure.



KEY PLAN  
NOT TO SCALE

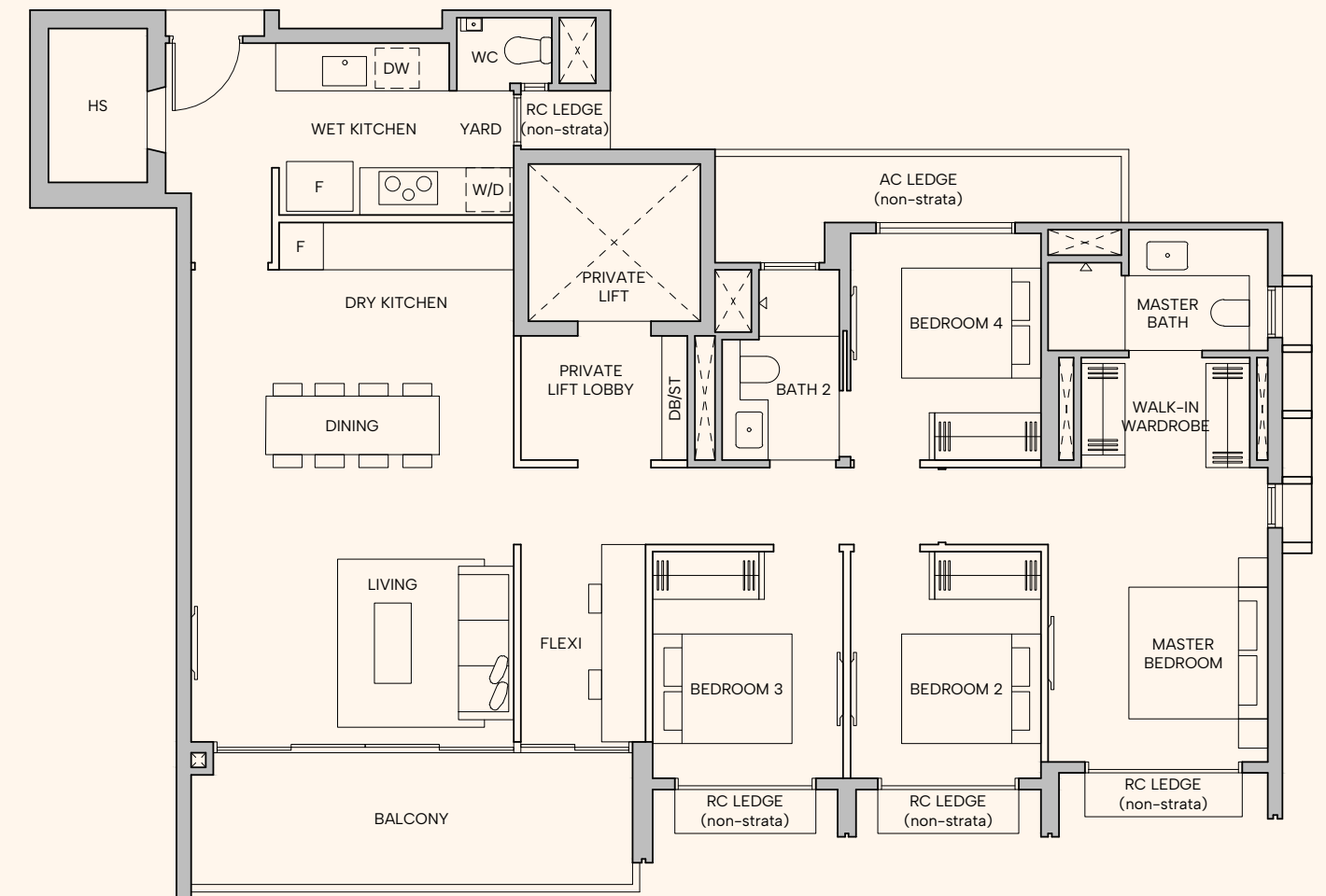
# 4 Bedroom Suite + Flexi

## TYPE D2b

133 sqm (1432 sqft)

### BLOCK 20

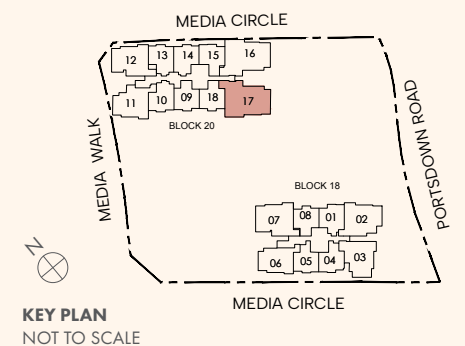
#02-17 to #22-17



#### LEGEND

F FRIDGE W/D WASHER CUM DRYER DB DISTRIBUTION BOARD ST STORE AC AIR-CONDITIONER  
 RC REINFORCED CONCRETE HS HOUSEHOLD SHELTER WC WATER CLOSET DW DISHWASHER

DISCLAIMER: Area includes balcony where applicable, and excludes among others, the Air-Conditioner (AC) ledge, airwell, Reinforced Concrete (RC) Ledge and Services Voids. Please refer to the key plan for orientation. All floor plans are approximate measurements only and are subject to government re-survey. Balconies are not to be enclosed except with a balcony screen which has been approved and complies with the Competent Authority's guidelines. The cost of screen and installation shall be borne by the purchaser. For an illustration of the approved balcony screen, please refer to Annex A of this brochure.



KEY PLAN  
NOT TO SCALE